



Maine Dressage Society



Maine Dressage Society is a USDF Group Member Organization (GMO) and all members are automatically USDF Group Members (GMs) For USDF Participating Membership, members must apply directly to USDF.

WINTER NEWSLETTER ISSUE # 68

2010 Maine Dressage Society Board of Directors

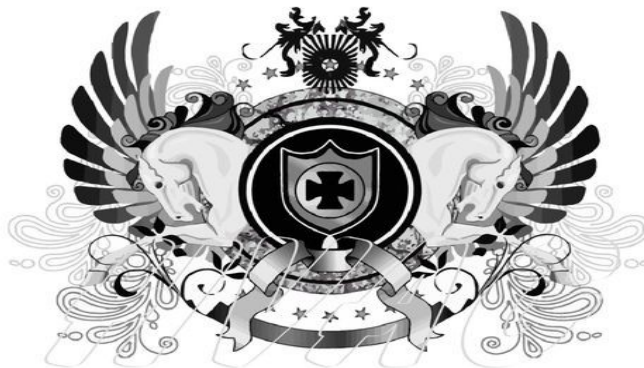
President/
Webmaster Bryn Walsh 97 Miles Rd., Newburgh Maine 04444
Pbrush@uninets.net 234-2147

Vice Pres Gretchen Shantar 1552 Pownal Rd Auburn Maine 04210
gramold@roadrunner.com 576-5934

Sec/
Newsletter Cheryl Peaslee 12 Ayrshire Ridge, Pittston Me 04345
cadpeaslee@yahoo.com 582-0762

Treasurer/
Tammi Brown PO Box 283 Bradley Maine 04411
tammib71@msn.com

Visit our website mainedressagesociety.org



Message from the MDS President

Happy New Year fellow Maine Dressage members! 2011 is going to be a great year filled with good riding, wonderful horses, educational clinics, and exciting shows!

Don't forget that January 30, 2011 is the MDS board meeting and annual awards banquet. The meeting starts at 10am with the banquet to follow at 12:30. It's all at the Senator Inn in Augusta. Beth Brainerd has worked hard to provide yet another great day of recognition for your 2010 show efforts! I hope to see you all there! Please email Beth at hbf@roadrunner.com to let her know you are coming!

I'm a very goal oriented person. In preparation for my goals for 2011, I have done a bit of reflecting on what MDS accomplished in 2010 and feel that we did some great things. We held another Part 1 of the L program with record attendance. We co-sponsored the Christoph Hess Clinic at Pineland. We produced great newsletters keeping you apprised of everything happening at MDS and in your clubs.

2011 is already bringing unique opportunities. The board approved free MDS membership (you still have to pay your club portion) for any board member who has been active for one year.. We hope this encourages participation on the board! We will be organizing Part 2 of the L program (more information to follow when we have it!). We have designed a scholarship program for any MDS member in good standing. We have obtained permission to produce the new 2011 dressage test call sheets. We have produced one heck of an omnibus that will be available to all current members to take home at the awards banquet! Already we've done so much and we are only 10 days in. I want more though. I want MDS to be more active in bringing you what you want.

In order for MDS to bring you what you want, we need to hear from you, and we need to have your help volunteering! We need you to send interesting information and great pictures! We need you organizers to send us your results! We need you to thank the people that are behind the scenes at meetings, shows, clinics, barns, etc.

We have a lot of great energy in the dressage community in Maine and I want to see it all come out in 2011! I hope we can bank on your time and energy to help us accomplish this for MDS members! Please feel free to contact me at BERedman23@hotmail.com at any time with questions, suggestions, or offers of help! Here's to the rest of winter passing quickly and easily!

Enjoy your horses!
Bryn Walsh

Maine Dressage Society
Year End Awards And Annual Meeting
Show Season 2010

We invite you to join us for our Annual Meeting and Banquet:
(If you are receiving an award you will have been sent a separate email.)

When: Sunday, January 30, 2011
Time: Board Meeting at 10am
Annual Meeting and Banquet arrival at 12:30

Where: The Senator Inn, August ME
Cost: \$30.00 per person, \$15 for children under 8

Please make checks payable to **MDS**.

Send Money and Banquet reservations to
Beth Brainerd/MDS Awards Banquet
67 Bill Howe Rd
Norway, ME 04268

We have to give the Senator a number so if you can reserve in advance that is much appreciated; you can pay at the door.

We will also be hosting a Silent Auction if you would like to bring something to auction and help support MDS projects.

If you have any questions please email Beth at hbf@roadrunner.com.

Our speaker this year is Charlotte Trentelman, an S judge from Florida. She will be here teaching a clinic and graciously has offered to speak. She will be talking about the new tests, she is very experienced and very interesting.

Beth

- **Please bring an item for the Silent Auction to the January 30th Banquet... Slightly used or new items please.**

Maine Dressage Society Banquet Reservation Form

Please make checks payable to MDS.

\$30.00 per person, \$15.00 under 8

Send Money and Banquet reservations to:

Beth Brainerd/MDS Awards Banquet

67 Bill Howe Rd

Norway, ME 04268

I/We will be attending the MDS Banquet on Sunday, January 30, 2011.

Name:

Name:

Name:

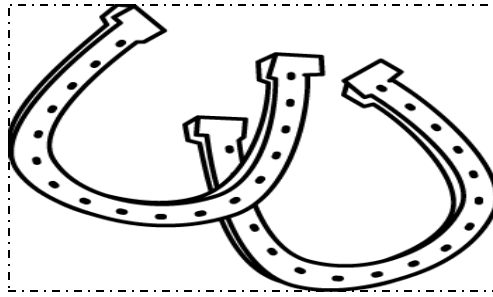
Name:

Address:

Phone:

Email:

Amount Enclosed: \$



Reminder Page

- It is that time again to mail your membership dues in. See your club section at the end of this newsletter and mail to your club treasurer A.S.P.
- We are putting the final draft of the junior scholarship together, watch for up coming details.
- Want to volunteer! Please contact any Board member and we would be glad to give you a job!
- Part 2 of the “L” Program will be coming this year!
- **Please bring an item for the Silent Auction to the January 30th Banquet... Slightly used or new items please.**

CMDA NEWS



CMDA Officers

President:	Wadean Chadwick	375-6658	rycjr@aol.com
Vice President:	Cheryl Peaslee	582-0762	cadpeaslee@yahoo.com
Treasurer:	Kelley Moore	592-5101	rockhorse8@yahoo.com
Secretary:	Karen Dewitt	522-9364	hosslover3@suscom-maine.com

CMDA Directors for MDS

Carol Poulin- Taylor	207-353-8587 H	207-353-8533 W	EspritEC@aol.com
Cheryl Peaslee	207-582-0762 H	207-582-2330 W	cadpeaslee@yahoo.com
Elizabeth Owens	207-725-1204		
Laurie Lee (alt)	207-395-4986 H		heavenleeacres@gmail.com

Our Awards banquet will be held at the Augusta Maine State Grange Hall again this year. The date will be 15th at noon time. It will be a pot- luck, Please bring your favorite dish. The guest speakers will be Erin Luck & Kelley Moore they are going to give us a presentation of the World Equestrian Games. Come and have fun with us at this special event. There will be a short business meeting and we will also be voting for President and V. President. Call Cheryl Peaslee if you need directions..

Please fill out and mail the new membership form to Kelley Moore, this will keep you on the mailing list.

We will also be having a spring riding clinic with Yvonne Coleman-Larson. Stay tune for more details.

Young riders camp. We need your help to make this happen. We will be meeting at Wadean Chadwick's farm on January 16th at 10:00am to set up committees. If you would like to join a committee to help set this up and give a day of your time please contact any Wadean or Cheryl. Our youth are important to us, and we as adults should be giving back and encouraging them... With that said please come and help make this camp happen.

A big Thank you to Carol Poulin-Taylor & Wadean Chadwick for the fun ride at Acorn Hill Farm in November. If you did not attend you missed a great day of riding the new test for 2011. Judges and riders all learned from this event and I hope we can do it again before riding season.... Thank you Erin, the Soup was the best!

EMDA NEWS



President: Betsy Hudson, 322 West Broadway, Bangor 04401, 207-942-5940, mousytongue@msn.com
Vice President: Val Philpot, 1077 Main Road, Bradford, ME 04410; 207-327-2951; philpotfarm@aol.com
Secretary: Cassie Elia, 2023 Essex Street Bangor, ME 04401-2112; 207-262-0133; ridinraffles@hotmail.com
Treasurer: Kitty Mitchell, 75 Haley Road, Winterport, ME 04496; 207-525-4435; kittym7@myfairpoint.net
Show Chairperson: Open
Clinic Chairperson: Bryn Walsh
Rep.-at-Large: Jessica Dion-Buswell, 491 Jarvis Gore Drive, Eddington, ME 04428; 207-843-5120; ChasenNonny@aol.com
Year-End Awards: Bryn Walsh, 97 Miles Road Newburgh, ME 04444, (207) 234-2147 beredman23@hotmail.com
Website Coordinator: Marianne Lagerklint, 17 Charles St., Orono, ME 04473, 207-866-0405, mlagerklint@roadrunner.com
EMDA Rep. to MDS: Val Philpot [see above]
Bryn Walsh [see above]
Becky Clark, 167 Broadway Apt. B., Bangor, ME 04401, (207) 478-2097 b_girl52@hotmail.com
Betsy Hudson, Alt. [see above]

EMDA Board Meeting 9/27/10

Treasurer's Report: holding even with 88 members for 2010. 2011 memberships are due.

Shows: Peppergrass may host a show and Kate Sherill may co-chair the Shows with Betsy. Puckerbrush will host the August show, 2nd Sunday in August. Stepping Stone offered to host another show as well.

Clinics: Bryn/Becky offered to help with Clinics for 2011. Topics & clinician suggestions will be accepted and can be sent directly to Becky.

Year-End Awards: a reminder will go out to send forms to Bryn. No test copies are needed!

MDS Meeting: Ads will be accepted for the Omnibus but they don't have a chairperson so ads are not a priority. Publishing on schedule will be the goal. Val Philpot offered to be a rep for meetings. Show dates need to be sent to Bryn & Becky. Betsy will check with Peppergrass and Stepping Stone for dates. A volunteer is needed to organize Part B of the L Judge Program. If anyone is interested, please contact Bryn.

Year-End Party: Sunday the 21st on November at Claire Paynes' house 6 pm, potluck (meals or desserts). All members are encouraged to attend whether or not they were showing. Trophies will be retired so that the hassle of hunting them down won't be an issue. Trophies are also running out of room for plaques/names. Photos can be taken of recipients with the trophy and/or names will be mentioned on the website. Smaller trophies may be given for recipients to take home. Slots are open if anyone wants to be on the docket as a chairperson or official for EMDA. All current member have offered to run again.

Submitted by : Cassie Elia

SHOWS, SHOWS, SHOWS! KUDOS TO KRIS NICOLA FOR A GREAT JOB!

A happy group of riders and horses showed at the first EMDA benefit show run by Kris Nicola at Stepping Stone Farm. Kris ended our season on a happy note – with a donation to EMDA for year-end awards!
Thanks Kris and all of your helpers.

EMDA BENEFIT SHOW AT STEPPING STONE FARM

Intro A: 1st Bruizer L'il Star (Jessie Darkis) 59%

Intro B: 1st Gromar (Respah Mitchell) 79 %, 2nd Bruizer L'il Star (Jessie Darkis) 58%, 3rd Aspen (Sharon Greenleaf) 55.5%

Reride: 1st 1st Gromar (Respah Mitchell) 80%, 2nd Bruizer L'il Star (Jessie Darkis) 57%, 3rd Aspen (Sharon Greenleaf) 51.5%

Training Junior: 1st Tucker (Hannah French) 62.6%; 2nd Gracie (Colleen McMoarn) 60.4%, 3rd Lily (Judy MacPheters) 59.5%; 4th My Lucky Penny (Ellen Bladen) 54.6%

Training Senior: Noah (Sandie Oliver) 66.4%; 2nd Maggie (Sharon Wilson-Barker) 56.4%

Reride Junior: 1st Tucker (Hannah French) 60%, 2nd Lily (Judy MacPheters) 58.26; 3rd Gracie (Colleen McMoarn) 56.52; 4th My Lucky Penny (Ellen Bladen) 54.64

Reride Senior: Noah (Sandie Oliver) 67.6%; 2nd Maggie (Sharon Wilson-Barker) 54%

First Level: 1st Noah (Sandie Oliver) 60.0%; 2nd Majik (Jerilyn Blethen) 58.66%; 3rd (Majik) Jerilyn Blethen 58.33%

Second Level: 1st Keena (Kris Nicola) 60.95%

Fourth Level: Astra (Betsy Hudson) 50%

CLINICS!

Gail MacCormack organized the free clinic in 2010 – thanks so very much Gail! A word of thanks to Serenity for their generosity of letting us use their facility for our free clinic!

EMDA 2010 YEAR END AWARDS!!!!

Junior

1. Gabby Fevens	Roan Ranger	63.500
2. Brianne Parent	Invincible	58.000
3. Brianne Parent	Ducati	57.500

Intro Sr

1. Respah Mitchell	What's Up Doc?	68.500
2. Karen Worcester	Jantine fan't Westerskar	67.500
3. Respah Mitchell	Gromar	63.750

4. Jessie Darkis	Bruizer's L'il Star	58.000
5. Gloria Kelleher	Little Oaks River Mist	57.500

Training Jr

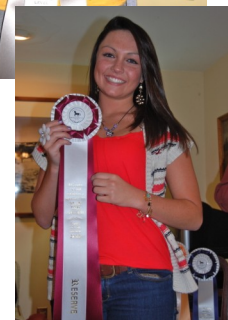
1. Molly Worcester	My Excellerator	71.700
2. Devin Brown-Hammond	Noah	62.400
3. Gabby Fevens	Roundsys Roan Ranger	60.000
4. Brianne Parent	Ducati	56.087

Training Sr

1. Karin Giordano	Blues Art in Motion	63.750
2. Tammi Brown	Superior Co-Ed	61.429
3. Andrea Hill	H.K. Shamrock	61.000
4. Sandi Oliver	Maverick	57.600

First Jr

1. Emma Oppewall	Puttin' On The Fritz	63.552
2. Devin Brown-Hammond	Noah	62.722



First Sr		
1. Erika Sawyer	Figures	62.631
2. Jerilyn Blethen	Majik	59.000
3. Kathleen Fox	Ray	52.500
Second Level and Above		
1. Bryn Walsh	Favereux	66.052 (FEI)
2. Lydie Worcester	My Exclerator	64.525 (2nd)
3. Emma Oppewall	Puttin' On The Fritz	58.486 (2nd)
4. Erika Sawyer	Figures	56.052 (2nd)
5. Betsy Hudson	Astra	54.070 (4th)

The Lavelli Trophy: Erika Sawyer
 The Leonardi Trophy: Molly Worcester
 The Mary Kate Davitt Award: Jerilyn Blethen

NEED DRESSAGE CONTACTS IN MAINE? CHECK OUT THE MDS WEBSITE! Need tests? Download them at www.mainedressagesociety.org. We are grateful to Bryn Walsh for her setting this up and updating it.

WINTER BOARD MEETING The EMDA meeting will tentatively take place on February 7th, Monday, at 6:00 p.m. at 322 West Broadway in Bangor. EMDA Board meetings are subject to rescheduling so please call 207-942-5940 before the meeting to assure it has not been changed. They are open meetings.

From Both Ends of the Reins

A word of thanks for all who donate so freely of their time. We enjoyed another lovely Awards Banquet at the home of Clare and Lew Payne – with lots of tasty food and fun conversation. Each banquet has its own flavor, but people lingered in conversation after the awards were given out and simply enjoyed the company of their horsey friends.

We are most grateful for the incredible hours put in by Bryn (Year-End chair, Clinic Chair, and EMDA Rep to MDS), Becky (2011 Omnibus Editor, show chair pro tem), Tammy Brown (MDS Rep at Large and MDS Treasurer), Cassie Elia (Secretary), Kitty Mitchell (Treasurer), Marianne Lagerklint (Publicity Chair), Jessica Dion-Buswell (ballot counter and Rep at Large to EMDA), Val Philpot the faithful Vice-President.

Kudos also go to those who hosted our shows and clinics: Puckerbrush Farms, Whispering Pines and Serendipity. A special thanks goes to Stepping Stone and Kris Nicola who did all of the organizing of an EMDA Benefit Show. Thanks to all – for your gifts large and small.

As always,



NMDA NEWS

Northern Maine Dressage Association



President:	Michelle Zambrano	564-8992
Show Chair:	Alison LaCourse	343-2270
Vice-President:	Lydia Rose	564-3499
Activities Chair:	Elisha Harvey	343-2170
Secretary:	Stacia Russell	564-3080
Awards Chair:	Brad Snow	327-2622
Treasurer:	Laurie Harvey	564-3598

NMDA will host 4 shows for 2011 show season as follows:

Saturday June 18, 2011 East Ridge Stables L Susanne Hamilton

Saturday July 16, 2011 Infinity Farm – L Judge Chris Joost

Saturday August 20, 2011 Stone Ridge Stables – L Deanna Thompson

Saturday September 17, 2011 Isaac Royal Farm - L Sandra Beaulieu

Benefit Trail Ride a Great Success!

NMDA hosted its second fall fundraiser trail ride on Sunday October 24th, earning the club \$100.00. Many riders met in Atkinson to enjoy a fun, relaxing trail ride. Everyone had a great time, including our equine friends meandering around a 650 acre woodlot with trails throughout. *Mel's Meandering Mudhole*, seemed to be a favorite of both horse & riders alike. We then traveled the *River View* trail along the Piscataquis River, connected to *Lala's Loop* back through *Ames Avenue* onto *The Dam Good Trail* then *Tim's Tractor Trail*. The last portion took us through *Sadie's Slip & Slide*, across *Elisha's Expressway* and then most ended the ride with a gallop up the ½ mile hill of *Ames Avenue*. What a nice, relaxing way for both horse & rider to end the Dressage Season. We will plan to host another in the fall of 2011!

NMDA 2010 Year-End Awards Banquet is/was February 4th at the Zambrano home. We had a great first show season & this is/was a great way to end the season with good food, company & prizes!

We are developing a plan to host some clinics in the spring. Watch for further information about these activities!

Thank-you to all the NMDA members, volunteers, host barns and parents that made out first show season so successful!

**If your horse says no, you either asked the wrong question
or asked the question wrong.**



SMDA NEWS

President Robyn Cuffey 929-6562 robyn@sacoriver.net
V. president Wendy Brunson 839-2114 wnbrunson@aol.com
Secretary Susan Pendleton 929-4991 spendleton@sacoriver.net
Treasurer Beverly Dudley 642-3696 drkside@fairpoint.net

Directors

Rebecca Jones jetson11@gamil.com
Gloria Steiger 929-8746 olgasteig@gmail.com
Nadia Kozair nadia-koziar@raodrunner.com
Gwyneth McPherson qmcpherson@pinelandfarms.com
Gretchen Shantar graronld@roadrunner.com
Paulette Shields 839-6867 pshield1@maine.rr.com
Jane Tremlett calamity101@raodrunner.com
Megan Rich sporthorse37@aol.com



News from Southern Maine Dressage Association January 2011

Happy Holidays!

This is the quiet time of year for most dressage riders as we reflect on our accomplishments for the year and make plans for the coming season. The SMDA Board of Directors is busy making plans for the coming year. Here are some of the things that are going on:

SMDA Banquet – January 21

The SMDA Banquet will be held on January 21 (Friday evening) at the Captain's Galley in Old Orchard Beach. This is a really fun evening and hope that all of our members can attend. It's our opportunity to get together and discuss plans for the coming year, and to recognize our 2010 show participants for their hard work and achievement. The sign-up form for the banquet is included with this newsletter.

We will be once again having a **SILENT AUCTION** at the banquet. This is an important fund-raiser for SMDA, so please bring something un-used or un-needed and let the bidding begin! Even if you can't make the banquet we'd love to get donations for the silent auction - please contact Wendy Brunson or Robyn Cuffey to make arrangements

SMDA Website Upgrades

Exciting news – we have added a brand new “**CLASSIFIEDS**” section to the SMDA website. Our website gets a good amount of traffic from people checking show dates and ride times, etc. We thought this was a perfect opportunity to offer a place for people to advertise their stable, horses for sale, saddles, etc. Ads are free for SMDA members but you do need to register to post an ad on the site. We are hoping this will be a popular feature that will provide our members a place to share information within the local southern Maine dressage community.

The SMDA Classifieds includes various categories ranging from horses for sale, farriers, real estate, and even includes a “Wanted” section. Ads can include photos. This is the perfect spot to advertise clinics and other activities that may be of interest to our members and others visiting our website.

2011 SMDA Schooling Shows

We are planning to again hold four Schooling Shows at the Hollis Equestrian Park in 2011. Show dates are May 15, June 12, August 7, and September 18. We have all of our judges lined up, and will once again include two “r” judges in addition to two “L Program” graduates as judges for our four schooling shows. Many riders have felt frustration when making the transition from Schooling to Recognized shows (such as UNH or the NEDA Fall Festival). It’s not uncommon to get scores that are 5 – 10% lower than what you’ve been accustomed to receiving in the Schooling Show environment. To

help our riders prepare for this transition, we are including some higher rated judges in our mix – if you are thinking of trying to participate in a USEF/USDF Recognized Show this year, attending a Schooling Show with a more highly trained and experienced “r” judge can provide a good reality check!

And please remember – it takes a lot of effort to put on these shows every year. If you are willing to help SMDA and serve as a Show Secretary, Show Manager, Scribe, Runner, Ring Steward, or Announcer – please contact any one of our Board members. We really need your help!

New USDF Tests for 2011

USDF has issued new tests this year. There are now three tests per level from Intro through Fourth Level. This is a big change, and we are looking forward to the new line-up. We are keeping our same general rules about the center classes – For Intro A & B the same horse & rider combo cannot show in Training Level or above, and for Intro C the same horse & rider combo cannot show above Training Level Test 1. These rules are consistent with USDF and designed to keep things fair for our lower level riders.

The new tests will be posted on our website in early January – time to start practicing!

Prix Caprilli Class

Our shows this year will include a Training Level Prix Caprilli. Prix Caprilli is a dressage test with jumps (maximum 2 feet). It is judged the same as a dressage test, including the horse’s performance over the jumps. The test will be posted on our website (Prix Caprilli Test 2) and will be open to riders at training level. We are looking forward to offering this new class and watching our dressage horses pop over some jumps!

SMDA 2011 Clinics

We are planning a clinic with Heidi Hauri-Gill again this year. The clinic will be held at Photo Finish Farm in Buxton, and will focus on riders looking to “Move Up” the levels. Last year’s clinic with Heidi was a big success, and we got a lot of positive feedback from the participants.

This year’s clinic will be in a different format. It will be a two-day event (Saturday and Sunday) and will emphasize preparing for and riding the new 2011 tests. On Saturday the riders will have a semi-private lesson with Heidi. Then on Sunday the clinic will be a “ride re-ride” event where the riders will ride their chosen test and receive feedback and instruction from the clinician prior to the re-ride. The fee for the weekend is \$120 per rider. We have not finalized the date yet, but it will be on a weekend in March – we’ll send out an email announcement and will post on the SMDA website when we have the date set.

SMDA is committed to offering clinics and other events as part of our educational mission. We really want to encourage our members to participate in the clinics, and would especially like to see more of our members coming to audit. Auditing a clinic is a

great experience and chance to learn. To encourage auditor participation, SMDA will subsidize the clinic and we are offering **FREE AUDITING** to current SMDA members!

2011 Membership Drive

Have you renewed your SMDA membership? Don't wait until Show Season – if you have not already done so, please send in your membership renewal right away. This is important if you want to receive the MDS Omnibus for the coming year, and to ensure your subscriptions to The Horse's Maine and the USDF Connection are not interrupted.

Please submit your membership form to Bev Dudley (address is on the form). Membership cards will be handed out at the Banquet, and emailed to those who are unable to attend the banquet.

Please make sure to clearly print your information, including email address, on your membership form. Yes, we know the space is small – feel free to attach a separate sheet of paper or write it in the margin of the membership form. And please notify the SMDA Treasurer and Secretary if your email address changes. We use email to notify the membership of special activities and events, and we promise we will not share your personal information with others!

SMDA Grants

Don't forget the SMDA Grant Program! We were pleased to have been able to provide Grants to several worthy individuals and causes in 2010, and are looking forward to continuing this program in 2011 – with priority given to those who have a history of volunteering for SMDA.

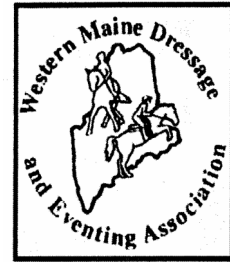
If you are interested in applying for an SMDA Grant, the application process and award criteria are posted on the SMDA website.

We hope that everyone had a wonderful holiday season, and that all horses are snug and safe this winter. Hope to see you at the Banquet and at other SMDA events in the coming year.

www.southernmainedressage.com

WMDEA NEWS

WESTERN MAINE DRESSAGE AND EVENTING ASSOCIATION OFFICERS



PRESIDENT: Cassi Martin PO Box 404 Buckfield, ME 04220
(207)890-2606 cassandrajmartin@yahoo.com

VICE PRESIDENT: Pat Martin PO Box 722 Norway, ME 04268
(207)890-3112 pat@paintpony.com

SECRETARY: Kate Holden 67 Bill Howe Rd. Norway, ME 04268 (207)743-6546

TREASURER/ MEMBERSHIP: Beth Brainerd 67 Bill Howe Rd. Norway, ME 04268
(207)743-6546 hbf@megalink.net

BOARD OF DIRECTORS:

Pat Martin Beth Brainerd ,Cassi Martin ,Stephanie Hatcher, Kate Holden ,Tina Brooks-

I've Spent most of my life looking for my perfect soul mate...

He was right in front of me.

The one I tell all my secrets too.

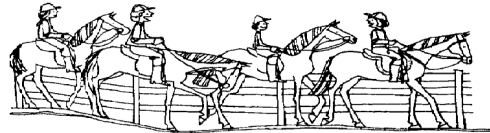
The one who never says anything rude back.

The one I spend all my time with!

That would be my horse!!!! 😊

•

Maine Dressage Association wants to keep you safe! This statement came from The United States Dressage Federation, “USDF strongly recommends all riders wear protective headgear when mounted.” Have a happy and safe riding season. We want to see you at the year end awards.



As of January 2010, the Board of Director voted to place a \$35.00 return check fee on all NSF checks. If you are experiencing a financial problem please contact our MDS treasurer Tammi Brown at **tammib71@msn.com** **She will be happy to help you before you are charged a late fee!**

NOTE FROM THE NEWSLETTER EDITOR:

Deadlines for the news letters are as follow;

March 1st

1st June 1st September 1st December 1st

Please send your news to cadpeaslee@yahoo.com for the next newsletter! I look forward to hearing you.

Did you change your address??? Please contact Cheryl Peaslee at cadpeaslee@yahoo.com to keep your Maine Dressage news coming!

Upcoming MDS Meeting Dates:

These are open meetings. All MDS members are welcome to come.

Sunday, January 30th 2011 @ 10:00 am @ the Senator Inn in Augusta

Pyramid of Training




Maine Dressage Society


Maine Dressage Society proudly represents our state's dressage enthusiasts! For more information about a club near you, please visit our website at

www.mainedressagesociety.org



Classifieds

"WANTED: Used equestrian DVD's and videos for Charlene Coad Memorial Equestrian Library. Do you have horse DVD's or videos collecting dust but that others could benefit from? Priority is for dressage and natural horsemanship training or exhibition, but all discipline, educational or entertainment, are of interest. Donations encouraged, payment negotiable. This will be a non-profit, self funding lending library at Downeast Dressage LLC, Bagaduce View Farm, Sedgwick, ME. Books also of interest. Please contact Michelle Coad at (207)326-4382 or michelle@downeastdressage.com."

Chestnut, 14 Hand, 12 year old, Thoroughbred/QH mare. This mare is schooling First Level Dressage, great gaits with a willing attitude. This talented gal would do well with an Adult amateur or Young Rider with quiet seat and hand. Cross Ties, Trail rides, Trailers, good for vet and farrier. \$2500.00 Contact Pat 207-890-3112

If you are looking for an easy going warmblood type in a small package, you need to see this guy! Maestros C Sharp aka "Diesel is an athletic Arabain gelding with Bask bloodlines. He has shown first level dressage, is ready to go Second level and is schooling Third level. He is quiet and easy to ride, incredibly willing and forgiving. He has done western pleasure and is great on trail. He gets along with others, human and equine. Great for vet, farrier, cross ties and trailers. He is a super Adult Amateur or Young Rider mount. offered for a limited time at \$6500.00 contact Pat 207-890-3112

Several talented schoolmasters through Fourth Level available for in barn lease. Reasonable rates, FEI rider, trainer on site, for more information contact Pat 207-890-3112

Looking for a barn job? I have one 5 day a week 2-3 hours, pays \$10.00 per hour. If you teach lessons it could become more income for you! Please call Wadean Chadwick at 577-6905

Remember—classified ads are free for members! Send your information to Cheryl Peaslee at cadpeaslee@yahoo.com for the next issue! Pictures are welcome! You may also send you information to Bryn Walsh at pbrush@uninets.net in order for your classified to be placed on the website, also free of charge for members!



FOR SALE OR IN BARN LEASE

Kandinsky D'Esprit

Gorgeous dark bay 16.1 hand, 8 year old gelding
ATA registered Trakehner by Impressionist
Started showing Second Level this spring
Schooling some Third Level movements
Trained and shown by Carol Poulin-Taylor
This talented boy can take a confident rider to the upper levels.
Call for information/appointment
Carol 207-353-8587

I hope everyone is looking forward to a great dressage new year. I would like to invite your group to a wonderful and fun educational opportunity. This would be a freestyle clinic by Cynthia Collins of Luna Tunes Freestyles. As an award winning freestyle designer and choreographer for over a decade, my freestyle clinics are designed to fit the needs of many levels of your riders.

This could be a complete freestyle, restructure of an existing freestyle, Pas de Deux or, for riders not yet ready or desire for a freestyle, riding to appropriate music that fits their horse's tempo which helps with rhythm and relaxation. My fee is \$150 per rider for 2 sessions with 5 - 10 sessions per day. There are additional fees to complete a freestyle, but they are reasonable and riders will receive a discount for riding in the clinic. Auditors will also enjoy and learn much about freestyles and music selection by attending the freestyle clinic. I do not charge for auditors, so any fees gathered from them are yours to help off site clinic costs. There is also a 2 hour lecture available that covers the USEF rules and USDF/FEI freestyle requirements for \$200. Freestyle clinics can be partially funded by "The Dancing Horse" Fund through The Dressage Foundation. My only other costs are travel, food, and housing which I prefer staying at a host's house.

I encourage you to check out the clinic page of my web site www.LunaTunesFreestyles.com and/or my Face book page. I have been enjoying giving freestyle clinics for 10 years. This is a different type of educational clinic, and fun for all. Please consider hosting a freestyle clinic and if you have any questions, please feel free to contact me via e-mail or cell (760)963-5869. Cynthia Collins

Year End Awards 2010 EMDA Rider Report Form

Rider: _____

Horse: _____

Level: _____

Rider's Phone Number: _____

Jr. or Sr. (please circle one)

To assist in compiling information concerning the 2010 EMDA Year End Awards, you are *required* to submit this form to EMDA. This will help us double-check our records and get back to you if there are any questions. Mail or email (preferable) this information by November 1st, 2010 to: Bryn Walsh, 97 Miles Road Newburgh, ME 04444 , (207) 234-2147, beredman23@hotmail.com.

DATE	SHOW	TEST	SCORE
	EMDA Rider-Run (optional)		
	EMDA Rider-Run (optional)		
	EMDA Rider-Run (optional)		

NOTES:

1. IMPORTANT! – You are *required* to submit this form by Nov 1st if you want to qualify for a year-end award:

If this form is not received by Nov 1st, you will not receive a year-end ribbon so please make sure you submit it on time! Reminder: You must be an EMDA member by the date of the first 2010 EMDA Rider-Run Show to be eligible for EMDA 2010 Year End Awards.

2. In order to be eligible for Year End Awards, scores must be obtained from at least two different judges (min. 3 scores total if showing below second level, 2 scores at 2nd or above) with the following exception: if, a rider only qualifies by riding at EMDA shows (not other EMDA pointed shows), and if EMDA uses the same judge at more than one of its three shows, then the rider will still qualify. [However, if the rider only rides in only two shows: one EMDA show and one outside show, then the rider must still show under two different judges in order to qualify for Year End Awards.]
3. This form has nothing to do with MDS!
4. Only list one horse, one rider, and one level per form (make copies as needed).
5. Riders are only eligible for awards at 2 consecutive levels. If you qualify for 3, you will forfeit your eligibility at your lowest level.

You must report all scores, not just the ones you like.

7. We point any show pointed by MDS. THIS YEAR THE EMDA AND PUCKERBRUSH SHOWS WERE OMITTED FROM THE OMNIBUS. RESULTS FROM THEM AS WELL AS FROM THE MDS APPROVED SHOWS IN THE OMNIBUS SHOWS ARE POINTED. THEY WILL ALSO COUNT TOWARDS MDS YEAR-END AWARDS. If you have any questions as to whether a show is pointed by EMDA, please contact Bryn Walsh, 97 Miles Road Newburgh, ME 04444 , (207) 234-2147, beredman23@hotmail.com

Please note that to qualify as junior riders for EMDA 2009 membership and Year-End Awards, riders must be under 18 years of age as of January 1st of the show season. Riders must also be EMDA members by the date of the first Rider-Run show.

Maine Dressage Society
Competition Awards Score Report Form

PLEASE PRINT CLEARLY

Horses Name: _____

Rider's Name: _____

Owner's Name: _____

Circle one: Junior/young rider: Under 21, Senior: 18-49, Vintage: 50-59, Master: 60+, adult amateur

Address: _____

City & State: _____ Zip: _____

Phone: _____ cell phone: _____

Email: _____

Horses: Age: _____ Breed: _____ Color: _____ Height: _____ Sex: _____

Club affiliation (circle those appropriate):

CMDA EMDA NMDA SMDA WMDEA

Special Awards – please check those appropriate

First Level/First year Aged Horse School Horse Bronze Medal Silver Medal Gold Medal Platinum Medal Breed Award

Show Name & Location Date Level & Test Score % Judge's Name

Please see the omnibus for copy of the rules for the Maine Dressage Society Year End Awards.

Certification that this is a true report: Your signature or your parent's signature (if under 18 years of age) attests that these are accurate scores, earned in accordance with the Current MDS Awards Program Rules. Please include a copy of the 1st page of each test. Please use one form per level and per horse.

Signature: _____

Please submit this form to:

Beth Brainerd (MDS Awards), 67 Bill Howe Rd., Norway, ME 04268 hbf@roadrunner.com

Eastern Maine Dressage Association
Application for membership for 2011 season (12/01/10-12/01/11)



What do you get as a EMDA member?

1. One free clinic offered per year – entirely subsidized by EMDA
2. Reduced EMDA show fees
3. MDS Omnibus (available for late joiners only as supplies last)
4. Automatic membership to USDF and MDS
5. Quarterly USDF Bulletin and quarterly MDS & EMDA newsletter
6. Information on shows and clinics in the EMDA area

Possibility for earning awards for show performance within EMDA and MDS (add'l MDS fee req.)

Please check:

New membership **Renewal (USDF # required)** / **Individual** **Junior** **Family**

A family membership qualifies one person for a group membership in USDF.

USDF RULE - All additional family members must pay an additional \$10.00 and will receive Supporting Family Member status.

Must have birthdates of all Junior members for USDF and year-end awards.

- Unless you are a new member your USDF # is required

Primary Member Name (automatic USDF membership): _____

USDF # (required) _____ **Birth Date(MM/DD/YYYY)** _____

Add'l Family Member #1 _____

Requires an additional USDF membership fee of \$10.00

USDF # (required) _____ **Birth Date (MM/DD/YYYY)** _____

Add'l Family Member #2 _____

Requires an additional USDF membership fee of \$10.00

USDF # (required) _____ **Birth Date (MM/DD/YYYY)** _____

Street Address _____

City _____ **State** _____ **Zip** _____

Phone # _____

Email _____

****Newsletter will be available on the MDS website for your viewing and printing unless otherwise arranged****

I would like to volunteer as (check all that apply):

Show Secretary Show Manager/co-manager Ring Steward Scribe Scorer

Announcer Runner Show set-up Banquet Committee Other: _____

Topic or speaker I would like to see at a clinic/meeting: _____

Category of Membership and Payment(membership year begins December 1 and expire November 30)

1. EMDA dues (includes MDS and USDF dues)

Individual Junior Family (1 full USDF membership + \$10 for each additional family member)

\$34 \$29 \$47 \$ _____

2. Memberships sent in after November 15, 2010 – please include \$10 late fee (Note: late fee does not apply to first-time members of MDS) \$ _____

3. Additional USDF supporting memberships (families only) # _____ @ \$10.00 each = \$ _____

4. Additional Omnibus # _____ @ \$10.00 each = \$ _____

5. If you are already a 2011 member of another MDS club, subtract \$25 \$ _____

Total \$ _____

Please send completed application and check made out to EMDA to: Kitty Mitchell, 75 Haley Rd, Winterport, ME 04496. Phone: (207)525-4435; Email: kittym7@myfairpoint.net

*Please note that separate Horse Registration Forms/money (Checks should be made out to MDS) should be filled out and sent directly to Beth Brainerd, 67 Bill Howe Rd. Norway, ME 04268

Southern Maine Dressage Association

www.southernmainedressage.com

Application for membership for 2011 season!
Please submit prior to October 1, 2010

What do you get as a SMDA member?

- Free subscription to The Horse's Maine
- MDS Omnibus
- Automatic membership to USDF and MDS
- Quarterly USDF Bulletin and quarterly MDS newsletter
- Information on shows and clinics in the SMDA area
- Possibility for earning awards for show performance within SMDA and MDS

Please check:

New membership **Renewal** / **Individual** **Junior** **Family**

A family membership qualifies one person for a group membership in USDF.

USDF RULE - All additional family members *must* pay an additional \$8.00 and will receive Supporting Family Member status.
Must have birthdates of all Junior members for USDF and year-end awards.

Primary Member Name (automatic USDF membership): _____

USDF # _____ **Birth Date(MM/DD/YYYY)** _____

Add'l Family Member _____

Requires an additional USDF membership fee of \$8.00

USDF # _____ **Birth Date (MM/DD/YYYY)** _____

Add'l Family Member _____

Requires an additional USDF membership fee of \$8.00

USDF # _____ **Birth Date (MM/DD/YYYY)** _____

Street Address _____

City _____ **State** _____ **Zip** _____

Phone # _____

Email _____

Newsletter will be available on the MDS website for your viewing and printing unless otherwise arranged

I would like to volunteer as (check all that apply):

Show Secretary Show Manager/co-manager Ring Steward Scribe Scorer

Announcer Runner Show set-up Banquet Committee Other: _____

Topic or speaker I would like to see at a clinic/meeting: _____

Category of Membership and Payment

1. SMDA dues (includes MDS and USDF dues)

Individual Junior Family (1 full USDF membership + \$8 for each additional family member)

\$34 **\$32** **\$39** \$ _____

2. Memberships sent in after December 15, 2010 – please include \$10 late fee (Note: late fee does not apply to first-time members) \$ _____

3. Additional USDF supporting memberships (families only) # _____ @ \$8.00 each = \$ _____

4. Additional Omnibus # _____ @ \$10/each = _____ \$ _____

5. If you are already a 2011 member of another MDS club, subtract \$25 \$ _____

Total: \$ _____

Please send completed application and check made out to SMDA to: Beverly Dudley, Box 1477, Standish, ME 04084

*Please note that separate Horse Registration Forms/money (Checks should be made out to MDS) should be filled out and sent directly to Beth Brainerd 67 Bill Howe Rd. Norway, ME 04268

Western Maine Dressage and Eventing Association

Application for membership for 2011 season!

Please submit prior to October 1, 2010

What do you get as a WMDEA member?

- MDS Omnibus (available for late joiners only as supplies last)
- Automatic membership to USDF and MDS
- Quarterly USDF Bulletin and quarterly MDS newsletter
- Information on shows and clinics in the NMDA area
- Possibility for earning awards for show performance within NMDA and MDS

Please check:

New membership **Renewal (USDF # required)** / **Individual** **Junior** **Family**

A family membership qualifies one person for a group membership in USDF.

USDF RULE - All additional family members must pay an additional \$10.00 and will receive Supporting Family Member status.

Must have birthdates of all Junior members for USDF and year-end awards.

- Unless you are a new member your USDF # is required

Primary Member Name (automatic USDF membership): _____

USDF # (required) _____ **Birth Date(MM/DD/YYYY)** _____

Add'l Family Member _____

Requires an additional USDF membership fee of \$10.00

USDF # (required) _____ **Birth Date (MM/DD/YYYY)** _____

Add'l Family Member _____

Requires an additional USDF membership fee of \$10.00

USDF # (required) _____ **Birth Date (MM/DD/YYYY)** _____

Street Address _____

City _____ **State** _____ **Zip** _____

Phone # _____

Email _____

**** Newsletter will be available on the MDS website for your viewing and printing unless otherwise arranged****

I would like to volunteer as (check all that apply):

Show Secretary Show Manager/co-manager Ring Steward Scribe Scorer

Announcer Runner Show set-up Banquet Committee Other: _____

Topic or speaker I would like to see at a clinic/meeting: _____

Category of Membership and Payment(memberhip year begins December 1 and expire November 30)

1. WMDEA dues (includes MDS and USDF dues)

Individual Junior Family (1 full USDF membership + \$10 for each additional family member)

\$43 **\$38** **\$48** \$ _____

2. Memberships sent in after December 15, 2010 – please include \$10 late fee (Note: late fee does not apply to first-time members of MDS) \$ _____

3. Additional USDF supporting memberships (families only) # _____ @ \$10.00 each = \$ _____

4. Additional Omnibus # _____ @ \$10.00 each = \$ _____

5. If you are already a 2011 member of another MDS club, subtract \$25 \$ _____

Total \$ _____

Please send completed application and check made out to WMDEA to: Beth Brainard, 67 Bill Howe Rd, Norway, ME 04268. Phone (207)743-6546 Email: hbf@roadrunner.com

*Please note that separate Horse Registration Forms/money (Checks should be made out to MDS) should be filled out and sent directly to Beth Brainerd, 67 Bill Howe Rd. Norway, ME 04268